


## Hilmar™ 8360 Whey Protein Hydrolysate Instantized

Hilmar™ 8360 is an instantized 80% whey protein hydrolysate designed for supplements, sports nutritional applications and medical nutritionals. It is derived from fresh, sweet dairy whey processed by a special cross-flow filtration process. The concentrate is then enzymatically hydrolyzed to produce a mixture of peptides and free amino acids for enhanced nutritional benefits. Hilmar™ 8360 is further agglomerated and surface treated for added functional benefits.

### FEATURES / BENEFITS

- Excellent Dispersibility
- High Digestibility
- Heat Stable
- Highly Soluble
- Minimal Carbohydrate Levels
- Low Glycemic Index
- High Acid Solubility/Stability
- Superior Protein Source
- Excellent Amino Acid Profile
- Low Mineral Content
- Non GMO (our products are not manufactured with genetically engineered components)

### FOOD SAFETY & CERTIFICATION

- Produced in a GFSI-Certified Facility
- Kosher  and Halal Certified
- EU Compliant

### NUTRITIONAL VALUES

| Composition                 | Typical | Specification | Test Method      |
|-----------------------------|---------|---------------|------------------|
| Protein (% Dry Basis)       | 81.0    | 80.0 min      | Calculation      |
| Protein (% as is)           | 78.0    | 77.1 min      | AOAC             |
| Lactose (%)                 | 3.0     |               | AOAC             |
| Fat (%)                     | 6.0     | 7.0 max       | AOAC             |
| Moisture (%)                | 4.0     | 5.0 max       | AOAC             |
| Ash (%)                     | 5.0     | 6.0 max       | AOAC             |
| pH                          |         | 7.0-7.6       | 10% Sol. at 20°C |
| Scorched Particles (mg/25g) | 7.5     | 7.5           | SMEDP            |

| Microbiology                     | Specification | Test Method |
|----------------------------------|---------------|-------------|
| APC (CFU/g)                      | 10,000 max    | AOAC        |
| Coliforms (CFU/g)                | <10           | AOAC        |
| <i>E. Coli</i> (CFU/g)           | <10           | AOAC        |
| Salmonella (750g)                | Negative      | AOAC        |
| Yeast (CFU/g)                    | 50 max        | AOAC        |
| Mold (CFU/g)                     | 50 max        | AOAC        |
| Coagulase Positive Staph (CFU/g) | <10           | AOAC        |
| Listeria (25g)                   | Negative      | AOAC        |

| Other Nutritional Information  | Typical |
|--------------------------------|---------|
| Cholesterol (mg/100g)          | 220     |
| Total Calories (Kcal/100g)     | 380     |
| Biological Value (BV)          | 104     |
| PDCAAS                         | 1       |
| Protein Efficiency Ratio (PER) | 3.2     |
| Net Protein Utilization (NPU)  | 92      |
| Protein Digestibility          | 95      |

| MINERALS             | Typical |
|----------------------|---------|
| Sodium (mg/100g)     | 680     |
| Calcium (mg/100g)    | 500     |
| Potassium (mg/100g)  | 1,300   |
| Phosphorus (mg/100g) | 340     |
| Magnesium (mg/100g)  | 60      |
| Chloride (mg/100g)   | 130     |
| Iron (mg/100g)       | 0.7     |



# Hilmar™ 8360 Whey Protein Hydrolysate

## TYPICAL AMINO ACID PROFILE

*Amino acids represented as g/100g of product*

|                  |      |
|------------------|------|
| Alanine          | 4.2  |
| Arginine         | 2.2  |
| Aspartic Acid    | 8.7  |
| Cystine/Cysteine | 2.0  |
| Glutamic Acid    | 14.2 |
| Glycine          | 1.5  |
| Histidine        | 1.5  |
| Hydroxyproline   | <0.1 |
| Isoleucine*□     | 5.4  |
| Leucine*□        | 8.5  |
| Lysine*          | 8.0  |
| Methionine*      | 1.8  |
| Phenylalanine*   | 2.6  |
| Proline          | 4.9  |
| Serine           | 4.1  |
| Threonine*       | 5.7  |
| Tryptophan*      | 1.7  |
| Tyrosine         | 2.5  |
| Valine*□         | 4.5  |

\* Essential Amino Acids

□ Branched-Chain Amino Acids (BCAA)

## TYPICAL FATTY ACID PROFILE

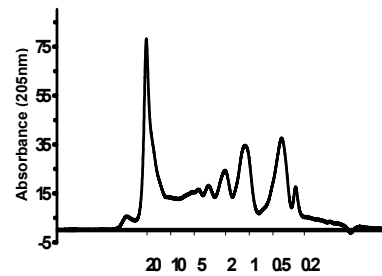
*Fatty acids represented as g/100g of product*

|                            |      |
|----------------------------|------|
| Saturated Fatty Acid       | 2.00 |
| Monounsaturated Fatty Acid | 1.50 |
| Polyunsaturated Fatty Acid | 0.90 |
| Trans Fatty Acid           | 0.15 |

## MOLECULAR WEIGHT DISTRIBUTION AND PEPTIDE PROFILE

|              |  | Typical |
|--------------|--|---------|
| AN/TN        |  | 12.5%   |
| Daltons      |  | %       |
| >20,000      |  | 17.0    |
| 5,000-20,000 |  | 15.6    |
| 1,000-5,000  |  | 26.7    |
| <1,000       |  | 40.5    |

## PEPTIDE PROFILE



## PHYSICAL CHARACTERISTICS

Hilmar™ 8360 is a spray-dried, cream-colored powder. It is homogeneous, free flowing and non-caking.

## PACKAGING

44.09 lb. (20 kg) heat-sealed, multi-wall kraft bag with inner polyethylene bag liner. Twenty-four bags per pallet.

## STORAGE / SHELF LIFE

Shelf life is two years from the date of manufacture in its original sealed packaging, through ideal storage conditions, which include temperatures below 25° C, relative humidity lower than 75%, and an odor-free environment. Stocks should be used in rotation, preferably within twelve months.

## RECOMMENDED LABEL

Whey Protein Hydrolysate  
Soy Lecithin

## ORDERING INFORMATION

| PART CODE | SHIPPING POINT |
|-----------|----------------|
| 200012    | Hilmar, CA USA |

*This information is presented for consideration in the belief that it is accurate and reliable, however, no warranty, either expressed or implied, is made and no freedom from liability from patents, trademarks, or other limitations should be inferred. Any data listed are averages only and are not to be considered as guarantees, expressed or implied, nor as a condition of sale.*

Hilmar Ingredients is a division of Hilmar Cheese Company, Inc.  
Product of USA

*We deliver the promise of dairy.™*